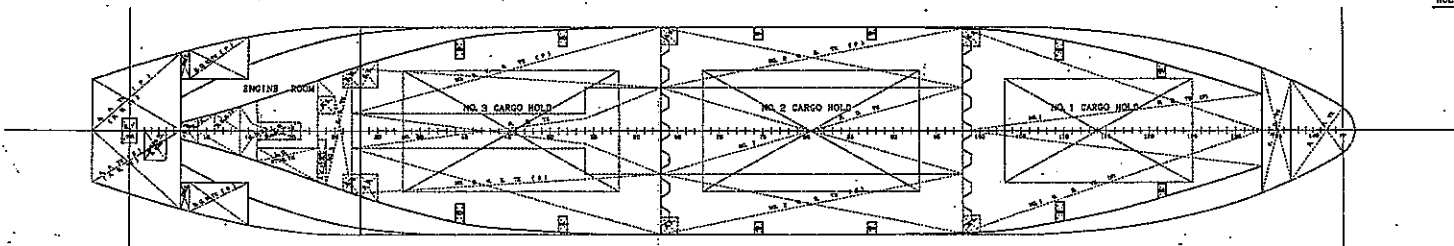
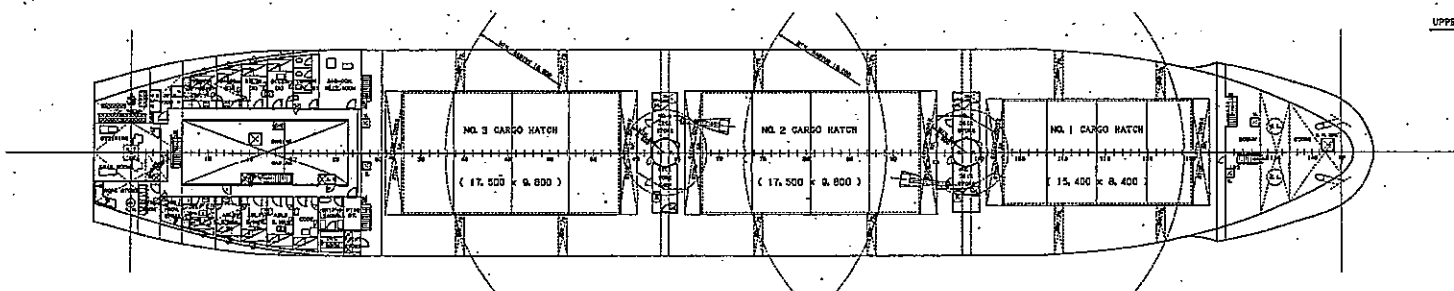
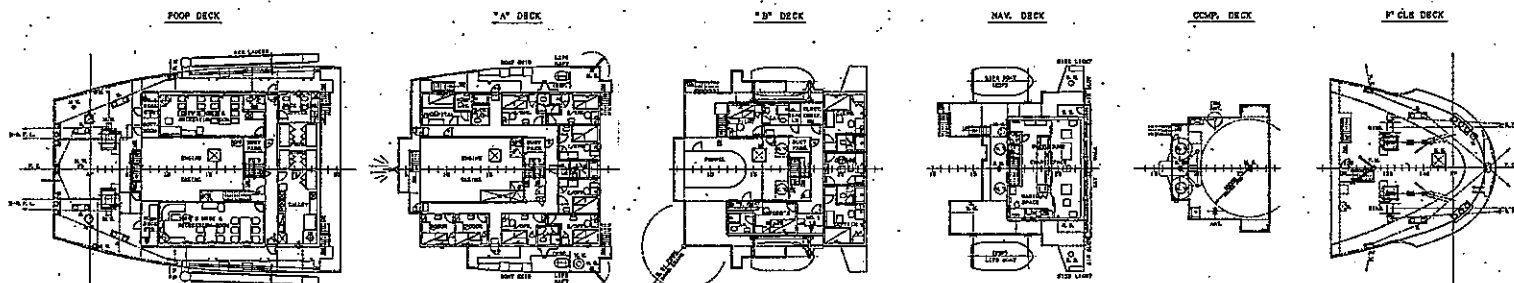
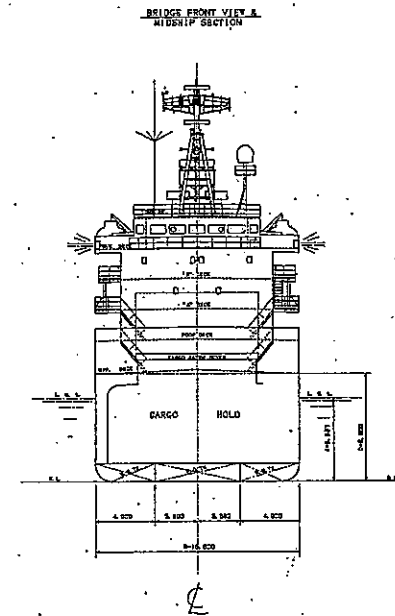
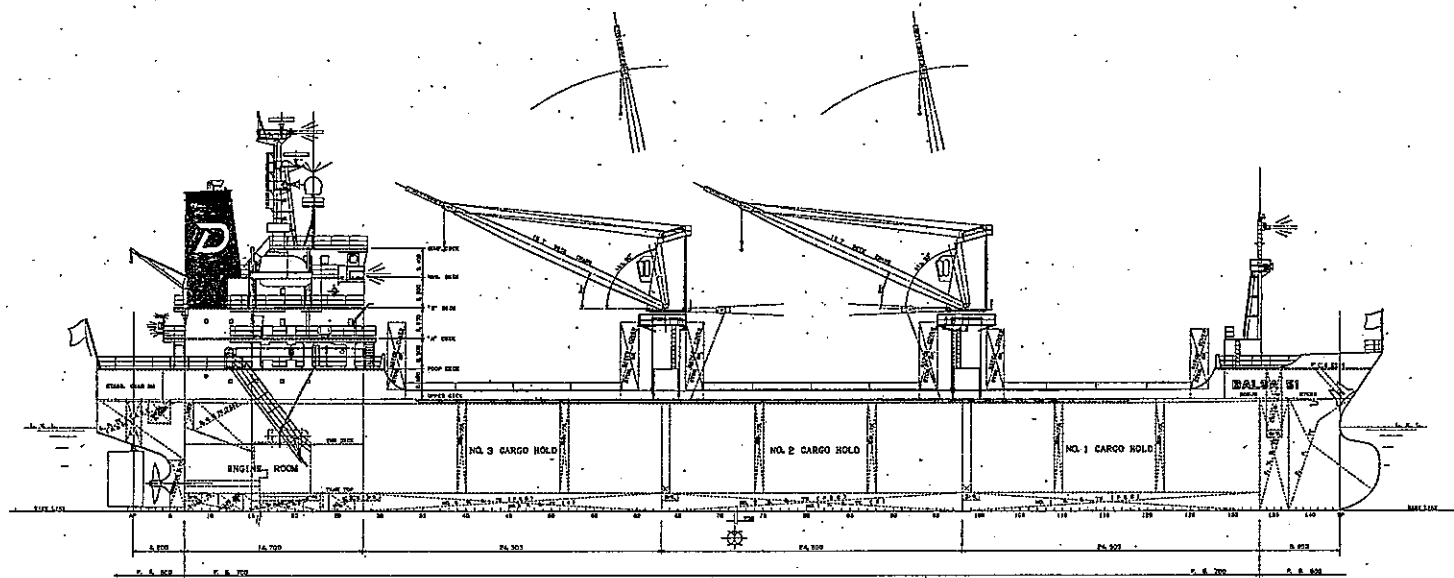


M.V. Balsa 51

GENERAL ARRANGEMENT

SCALE = 1/200



PRINCIPAL PARTICULARS			
LENGTH (O.A.)	155' 50"		
LENGTH (B.P.)	80' 00"		
BREADTH (M.D.)	16' 00"		
DEPTH (M.D.)	8' 00"		
DRAFT (SUMMER EXT.)	8' 00"		
DEADWEIGHT	8,520 MT		
GROSS TONNAGE	4,553 T		
NET TONNAGE	2,504 T		
MAIN ENGINE DEW 815000 (MARK T) 1 1 88T			
M.C.B.	2,704 kw (3,800 ps) x 200.0 rpm		
M.S.P.	2,975 kw (4,250 ps) x 180.0 rpm		
CLASS NK 1 NO 1 MNE			
COMPLEMENT			
DECK	ENGINE	OTHER	
CAPTAIN	1 CHIEF ENGINEER	1	
CHIEF OFFICER	1 1ST ENGINEER	1	
2ND OFFICER	2 2ND ENGINEER	1	
3RD OFFICER	1 3RD ENGINEER	1	
SUM	4	4	
OFFICERS 9 PERSONS			
BOATSWAIN	1	CHIEF COOK	1
ABLE SEAMAN	3	COOK	1
SUM	4	SUM	2
CREW 9 PERSONS			
PILOT (A/OFF CLASS) 1 PERSON			
SPARE (A/OFF CLASS) 1 PERSON			
SPARE (CREW CLASS) 4 PERSONS			
GRAND TOTAL ONBOARD 23 PERSONS			

REFERENCE:
Plan history: March 23, 2003
Coordinated due to instrument
of summer draft.

CALIFORNIA FUENTE INC.
BALSA 51
S408/409/410
S411/412/413

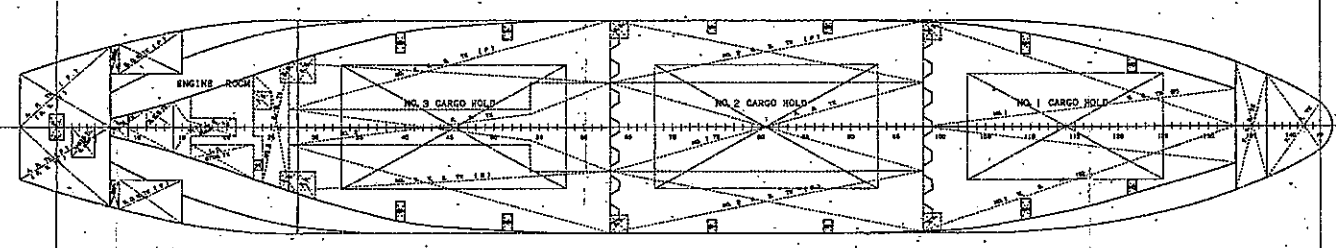
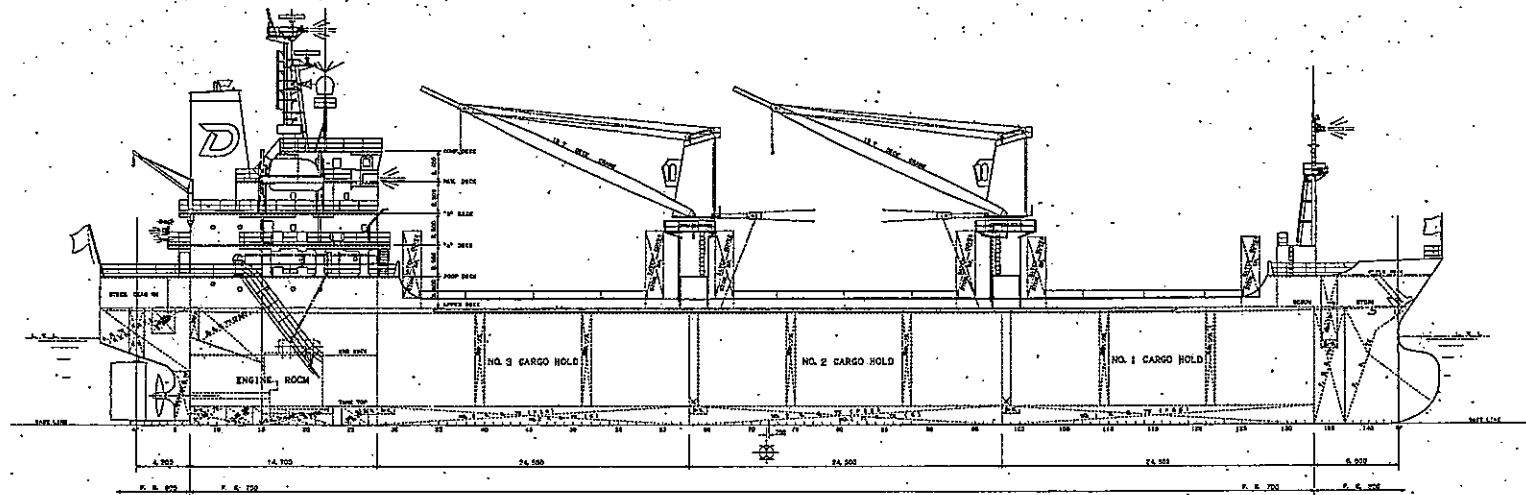
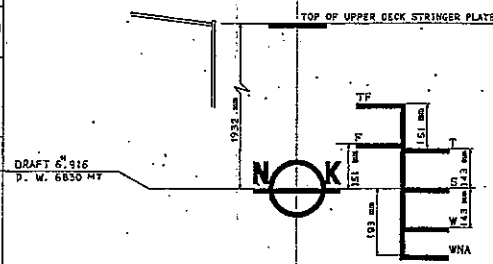
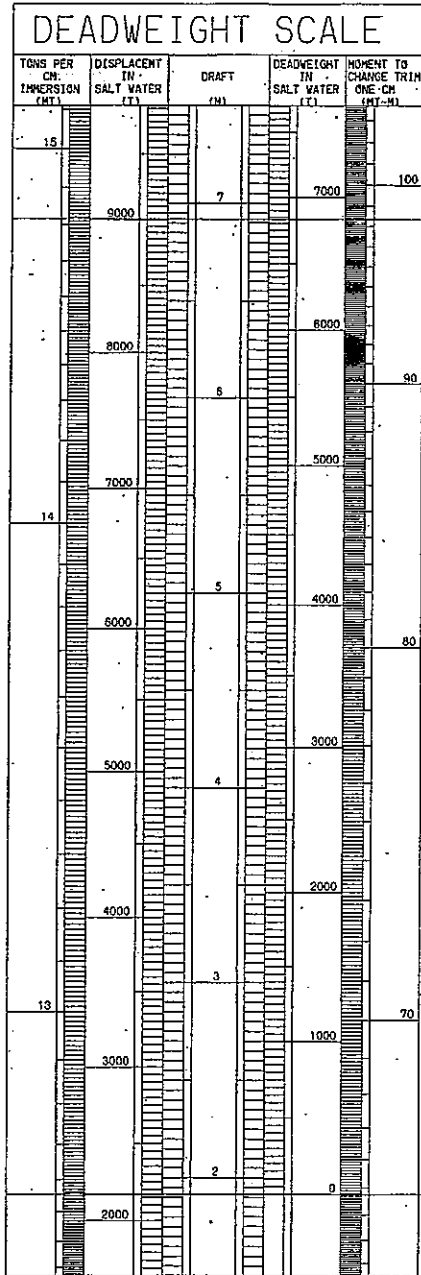
GENERAL ARRANGEMENT

FINISHED PLAN
CLASS N 1/200
BASEBO MARINE ENGINEERING CO. LTD
SASEBO WHARF 24RD
YOKOHAMA
SHIP REGISTERED

DEPT CHIEF *G. Wada*
DECT CHIEF *K. Yamada*
IN CHARGE *T. Yamamoto*
CHECKED BY *H. Wada*
DRAWN BY *K. Yamada*
DATE MAR. 25, 2003 DATE
DRAWN 1 1200P
WORK NO
DRAWING NO FJ 00-10-1P

CAPACITY PLAN WITH DEADWEIGHT SCALE

SCALE 1:200



CARGO HOLD (GRAIN) 1 CUB. FT. = 0.0283168 CUB. M.

COMPARTMENT	LOCATION (Fr. No.)	CAPACITY		X G (M)	K G (M)
		CUB. M	CUB. FT.		
No. 1 CARGO HOLD	98 ~ 133	2,342	83,770	-29.54	5.34
No. 2 CARGO HOLD	63 ~ 98	3,174	112,089	-4.47	5.44
No. 3 CARGO HOLD	28 ~ 63	3,162	111,645	18.05	5.50
TOTAL		8,678	307,504		

CARGO HOLD (BALE) 1 CUB. FT. = 0.0283168 CUB. M.

COMPARTMENT	LOCATION (Fr. No.)	CAPACITY		X G (M)	K G (M)
		CUB. M	CUB. FT.		
No. 1 CARGO HOLD	98 ~ 133	2,323	82,107	-29.33	5.30
No. 2 CARGO HOLD	63 ~ 98	2,945	104,002	-4.48	5.42
No. 3 CARGO HOLD	28 ~ 63	2,936	104,390	18.16	5.48
TOTAL		8,204	290,499		

FUEL OIL TANK 1 CUB. FOOT = 0.0283168 CUB. M.

COMPARTMENT	LOCATION (Fr. No.)	CAPACITY		X G (M)	K G (M)
		CUB. M	CUB. FT.		
No. 1 F.O. T.K.	C 63 ~ 98	249.5	8,811	239.5	8,459
No. 2 F.O. T.K.	C 27 ~ 63	141.2	4,966	135.6	4,789
No. 3 F.O. T.K.	C 23 ~ 27	23.3	823	22.4	791
TOTAL		414.0	14,600	397.5	14,039

WATER BALLAST TANK 1 CUB. FOOT = 0.0283168 CUB. M.

COMPARTMENT	LOCATION (Fr. No.)	CAPACITY		X G (M)	K G (M)
		CUB. M	CUB. FT.		
FORE PEAK TANK	C 137 ~ P.B.	150.7	5,322	134.3	-47.62
No. 1 W. B. T.K.	F 98 ~ 133	193.5	6,833	198.3	-28.44
No. 1 W. B. T.K.	S 98 ~ 133	193.5	6,833	188.3	-28.44
No. 2 W. B. T.K.	F 63 ~ 98	160.5	5,668	164.5	-6.17
No. 2 W. B. T.K.	S 63 ~ 98	160.5	5,668	164.5	-6.17
No. 3 W. B. T.K.	F 27 ~ 63	178.3	6,297	182.8	17.83
No. 3 W. B. T.K.	S 27 ~ 63	178.3	6,297	182.8	17.83
TOTAL		1,215.3	42,918	1,243.7	

DIESEL OIL TANK 1 CUB. FOOT = 0.0283168 CUB. M.

COMPARTMENT	LOCATION (Fr. No.)	CAPACITY		X G (M)	K G (M)
		CUB. M	CUB. FT.		
D.O. W. T.K.	F 8 ~ 15	30.3	1,070	29.1	1,018
D.O. W. T.K.	S 8 ~ 15	30.3	1,070	29.1	1,018
TOTAL		60.6	2,140	58.2	2,036

OTHER TANK 1 CUB. FOOT = 0.0283168 CUB. M.

COMPARTMENT	LOCATION (Fr. No.)	CAPACITY		X G (M)	K G (M)
		CUB. M	CUB. FT.		
M/E L.O. SUMP T.K.	15 ~ 22	11.1	392	38.33	0.56
M/E L.O. SUMP T.K.	16 ~ 23	7.8	275	36.23	0.55
BULK HEAD OIL T.K.	11 ~ 14	3.8	134	41.39	0.53
SLUCE T.K.	7 ~ 14	8.6	304	42.51	0.81
COG. W. T.K.	3 ~ 7	0.5	17	45.47	3.21

FRESH WATER TANK 1 CUB. FOOT = 0.0283168 CUB. M.

COMPARTMENT	LOCATION (Fr. No.)	CAPACITY		X G (M)	K G (M)
		CUB. M	CUB. FT.		
F. W. DECK TANK	C 133 ~ 137	119.9	4,234	119.9	-44.04
AFT PEAK TANK	F 85.5 ~ 7	85.5	3,019	85.5	48.73
AFT PEAK TANK	S 85.5 ~ 7	77.9	2,751	77.9	48.24
TOTAL		283.3	10,012	283.3	

DEADWEIGHT PARTICULARS

	WEEK	FRESHWATER (G)	DRAFT (M)	DISPLACEMENT (MT)	DEADWEIGHT (MT)
Tropical fresh water	TP	1,632	7.210	8,201	7,029
Fresh water	F	1,781	7.087	8,968	6,829
Tropical	T	1,790	7.059	8,211	7,043
Summer	S	1,922	6.916	8,999	6,820
Winter	W	2,076	6.772	8,787	6,618
Winter North Atlantic	WNA	2,125	6.723	8,713	6,544

PRINCIPAL PARTICULARS

CLASS	N K
PORT OF REGISTER	PANAMA
OFFICIAL NUMBER	22618-96-A
SIGNAL LETTER	39925
PRINCIPAL DIMENSIONS	
LENGTH (O.A.)	105.30 m
LENGTH (P.P.)	95.00 m
BREADTH (O.L.D.)	16.30 m
DEPTH (O.L.D.)	8.80 m
SUNNER DRAFT (O.L.D.)	6.687 m
SUNNER DRAFT (EXT.)	6.916 m
DISPLACEMENT AT SUNNER DRAFT	8,999 MT
DEADWEIGHT AT SUNNER DRAFT	6,820 MT
GROSS TONNAGE (INTERNATIONAL)	4,355
NET TONNAGE (INTERNATIONAL)	2,504
MAIN ENGINE	HITACHI 84V 51350C 600K (1212)
TYPE & No. OF SET	
MAXIMUM OUTPUT	2,794 KW (3,800 PS) @ 200.0 rpm
NORMAL OUTPUT	2,375 KW (3,250 PS) @ 189.5 rpm

REFERENCE
Plan history: March 25, 2003
Coordinated due to increment of summer draft.

CALIFORNIA FUENTE INC.
BALSA 51
5408/409/410
5411/412/413

CAPACITY PLAN WITH DEADWEIGHT SCALE

(FINISHED PLAN)

CLASS: 1:200

DEPT. CHIEF: *J. Kaito*

SECT. CHIEF: *M. Sakamoto*

IN CHARGE: *K. Sawayama*

CHECKED BY: *K. Baba*

DATE DRAWN: *March 25, 2003*

DATE ISSUED: _____

WORK NO.: _____

DRAWING NO.: SK10-01-1F